

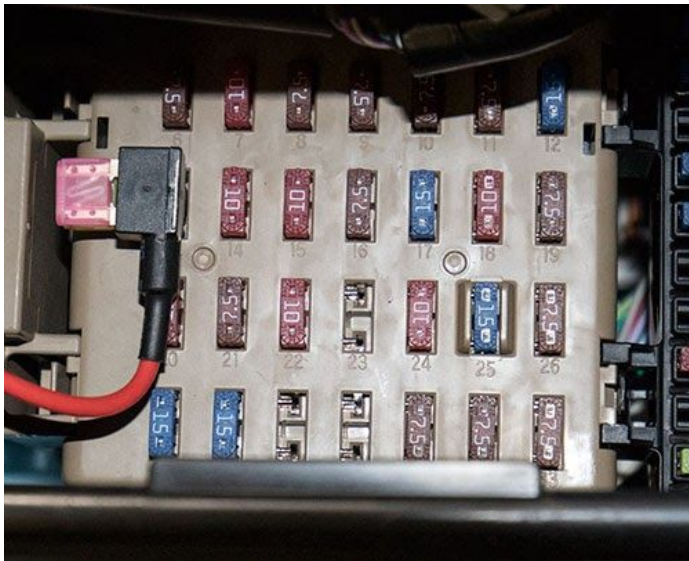


Thank you for your purchase of our camera on demand wiring harness. The installation is simple and should take around 30 minutes.

You will be working in 3 areas of the vehicle. The fuse box by the driver's door (knee) will be the first area. Then you will install the switch in the cubby hole (center). The last area is by the passenger side door.

First **disconnect the negative battery terminal** to prevent shorting out your fuses during installation.

ADD A FUSE INSTALL



Next locate the fuse box by the driver's side door. It is located around the level of your knee when seated in the driver's seat. Remove the cover.

Use slot 13 for the add a fuse as pictured to the left ("12v plug" w/ 20 amp fuse).

Our add a fuse (short red wire with black top) comes with 1 fuse already. When installing, you remove the existing fuse in the slot and place it in the **bottom** of the add a fuse. Now the add a fuse should have **two fuses** in it.

Plug in the add a fuse and replace the cover.

SWITCH INSTALL



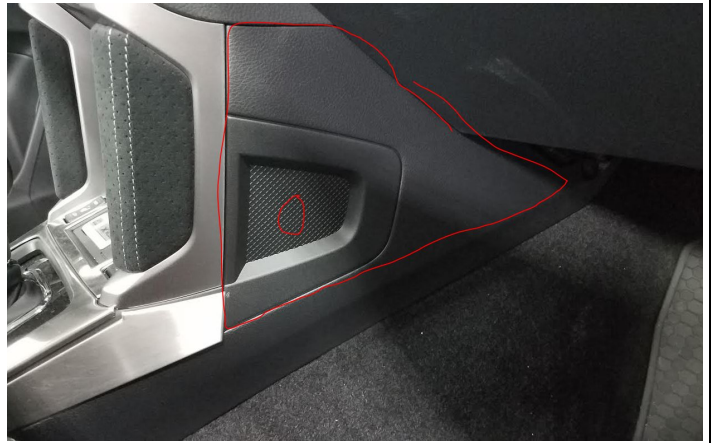
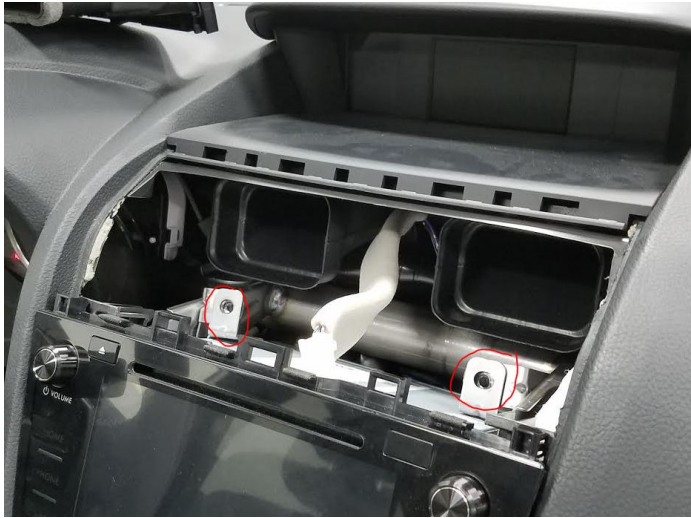
Next, run the wires to the center console or another area and **drill a 20mm hole to mount the switch**. To gain access behind the AC controls, you can use a screwdriver to pry the panel up from its clips.

NOTE 1: The switch has been updated. The terminal which is not in use can optionally be connected to a ground wire. This will cause the switch to illuminate when activated.

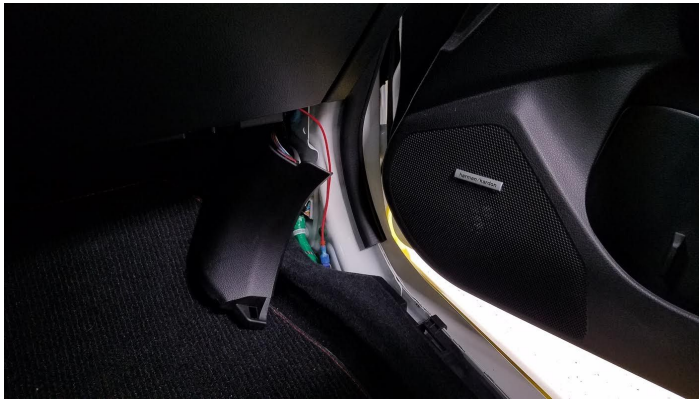
NOTE 2: The black material next to the panel is resistant to scratching while the panel is not, so place a small amount of pressure on it and slide the screwdriver behind / under the panel before prying to prevent damage to the plastic.

NOTE 3: Owners with Starlink head units (camera displays on the radio) will have to remove upper AC vents, remove the upper two bolts holding the radio in, and then remove the two lower bolts which can be accessed from both sides of the center console before access can be gained to the rear of the cubby hole.

(PICTURES ON TOP OF REVERSE SIDE)



SIGNAL WIRE T-TAP INSTALL

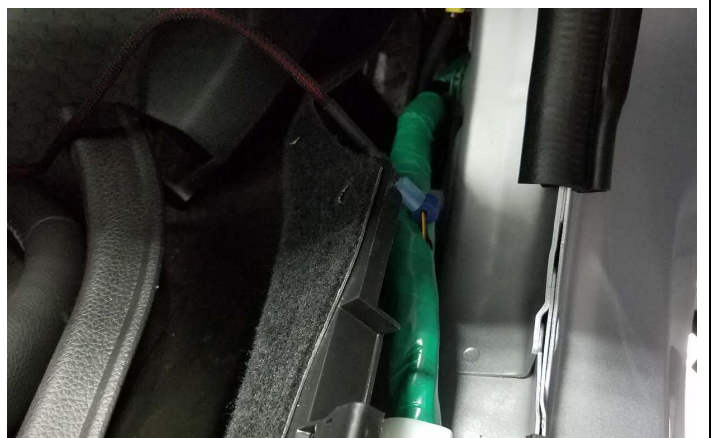
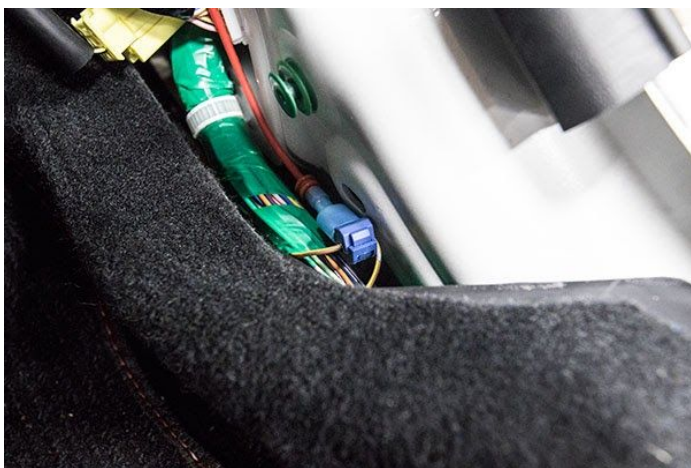


The final step is to remove the side sill on the passenger side area. The panel in front of it may also need to be pulled back to see the large bundle of wires going to the rear of the vehicle.

This bundle contains a brown wire with yellow stripe. 2018 models may use a yellow wire with red stripe.

NOTE: Some will have to remove the bundle's tape to locate the wire.

Use the T-tap connector to make a connection and plug in the harness to it.



Test: The button will work when the ignition is on. Push once to activate and push once more to turn off. If it does not work, please check the add a fuse for burnt / damaged fuses and that the T tap is making proper contact.

This completes your install of the camera on demand harness!