



OLM RW Style Paint Matched Trunk Spoiler

Part #: OLMA.70226.1 – K7X, D4S, 61K, K1X, G1U, K3X, M7Y, E8H, C7P

Application: 2015-2021 WRX & STi,

Questions? Email us at: sales@subispeed.com

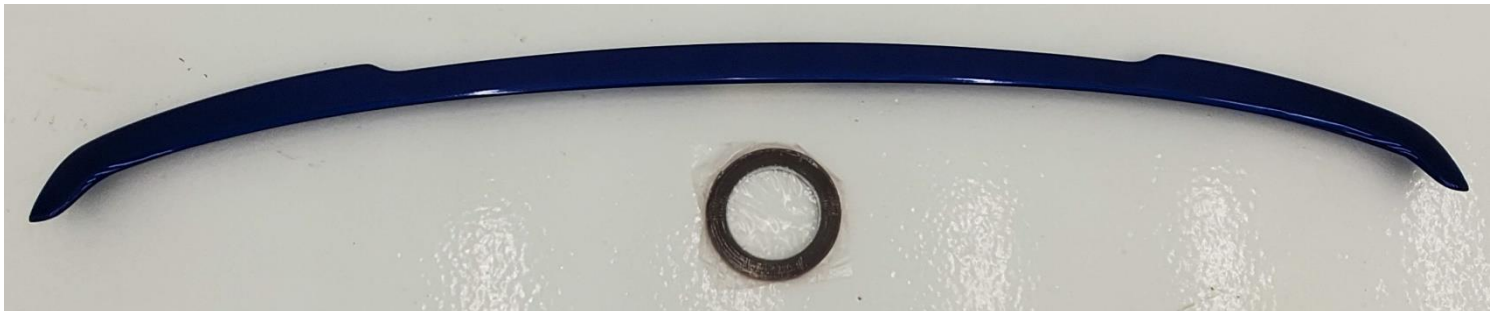
General Note Regarding The Use Of Automotive Adhesive Products

Temperature: Ideal application temperature range is 70°F to 100°F (21°C to 38°C). Pressure sensitive adhesives use viscous flow to achieve substrate contact area.

Time: After application, the bond strength will increase as the adhesive flows onto the surface (also referred to as “wet out”). At room temperature approximately 50% of ultimate bond strength will be achieved after 20 minutes, 90% after 24 hours and 100% after 72 hours. This flow is faster at higher temperatures and slower at lower temperatures.

Parts List:

- ① OLM paint matched spoiler
- ② Double-sided adhesive roll



Tools Needed:

Isopropyl alcohol

Clean cloth or rag

Installation Instructions:

- 1 – Remove your factory trunk lip spoiler if applicable
- 2 – Clean the area where the new spoiler will sit with some alcohol and a clean rag, allow time to fully dry.
- 3 – Using the included double sided adhesive roll, ②, apply as shown below to the underside of the spoiler, ①.



- 4 – Now with the adhesive on the spoiler, remove the red backing and attach it to the trunk. Take care to line up the outermost edge of the trunk with the spoiler.
- 5 – Apply firm pressure on the spoiler for 30 seconds to ensure a good bond with the trunk surface. Your install is now complete!