



OLM V2 Rear Window Visor

Part #: OLMA.70233.1

Application: 2015-2021 WRX & STi

Questions? Email us at: sales@subispeed.com

General Note Regarding Automotive Adhesive

Temperature: Ideal application temperature range is 70°F to 100°F (21°C to 38°C). Pressure sensitive adhesives use viscous flow to achieve substrate contact area.

Time: After application, the bond strength will increase as the adhesive flows onto the surface (also referred to as "wet out"). At room temperature approximately 50% of ultimate bond strength will be achieved after 20 minutes, 90% after 24 hours and 100% after 72 hours. This flow is faster at higher temperatures and slower at lower temperatures.

Parts List:

- ① - Rear window visor w/ pre-applied adhesive strips



① - top side



Pre-applied adhesive strips on the under side

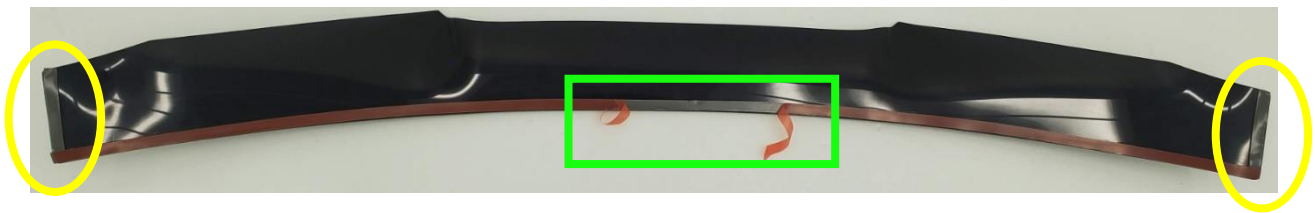
Needed For Install: You will need a rag and some water or rubbing alcohol to prep your rear window to ensure a clean mating surface for the adhesive. Make sure your rear window is dry before attempting to install the visor. Additionally, having another person to help with lining things up is recommended.

Installation Instructions:

1 – Using rubbing alcohol and a clean rag, prep the upper area of your rear window, ensuring the surface is clean of any dust or contaminants

2 – Next, peel away the backing from the pre-applied adhesive on the short sides of the visor shown in yellow below

3 - Cut a slit in the center of the backing on the long side of the visor and start peeling to expose ~6" of the adhesive as shown in green below



4 – Next, with a friend, place the visor on the rear window. While applying pressure to the middle of the visor, line up the outer edges with the rear window edges as shown below. Take care to leave the loose adhesive backing accessible on the roof of your car



5 – With the edges stuck down, apply pressure from the middle out towards the edges and pull the backing the rest of the way off

