



OLM V2 F1 Style 4th Brake Light

Part #: OLMA.70236.1: B, CBR, SB, SBR

Application: 2020+ Toyota Supra

Questions? Email us at: sales@ftspped.com

Required Tools

¼" drive ratchet

T-15 torx bit

8 mm socket - short

Flathead screwdriver

Lineman's pliers

Installation Instructions:

1 – Start by opening the hatch on your vehicle



2 – Above the taillights will be a black plastic cover. Simply grab and pull up from the indicated spot to unclip this from its 3 mounting points. Repeat for other side of the vehicle.



Installed cover, showing pry point



Removed cover, showing clip locations

3 – Next, using a T-15 torx bit and ratchet, remove the 2 screws located at the points indicated below



4 – Next using your short 8 mm socket and a ratchet, remove the 3 bolts from the wheel well liner shown in the picture below. Repeat for the other side of the vehicle.



Rear wheel well liner bolt locations (3)

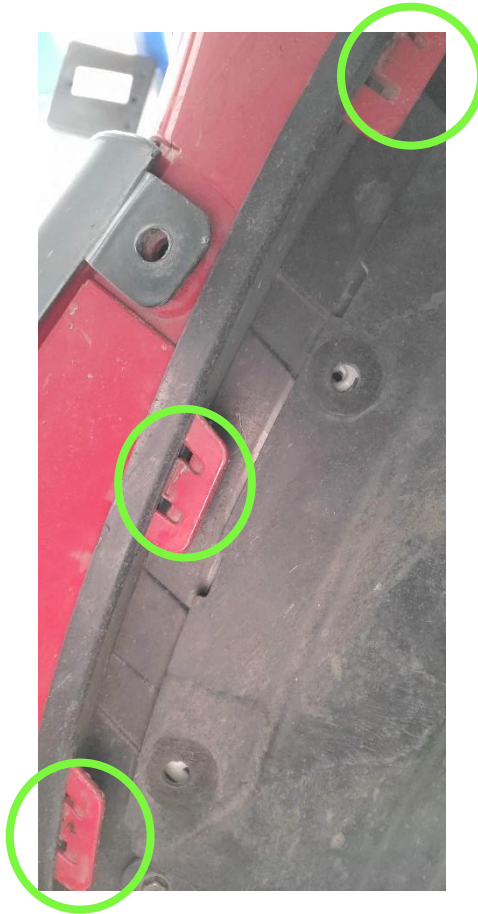
Note: Depending on aftermarket wheel/tire size as well as suspension modification choices, you may have to remove your rear wheel to have enough access to remove these 3 bolts on either side. If you have factory wheels installed, please disregard this.

5 – Now, under the car remove 4 more 8 mm bolts from the rear diffuser as indicated below



Diffuser bolt locations (4)

6 – Still underneath the car, move to the outside edge and locate the three body-colored clips shown below. Using a flat head screwdriver, release these from the bumper support bracket. Repeat on the other side of the vehicle.

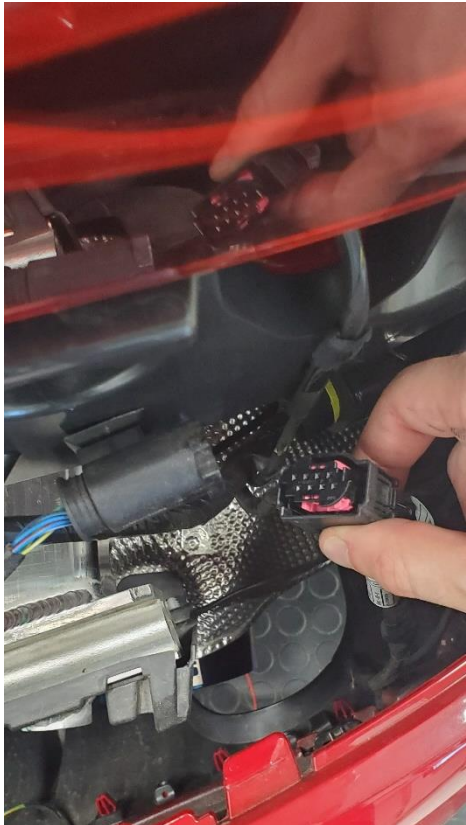


7 – Now, with all fasteners removed, start on one side of the vehicle where the bumper meets the rear quarter panel. Pull out on the bumper, releasing the clips as you move along the bumper line.

Note: When trying to release the clips under the taillights and center of the rear bumper, it may be helpful to lift the bumper up slightly from the diffuser area before pulling out on the bumper

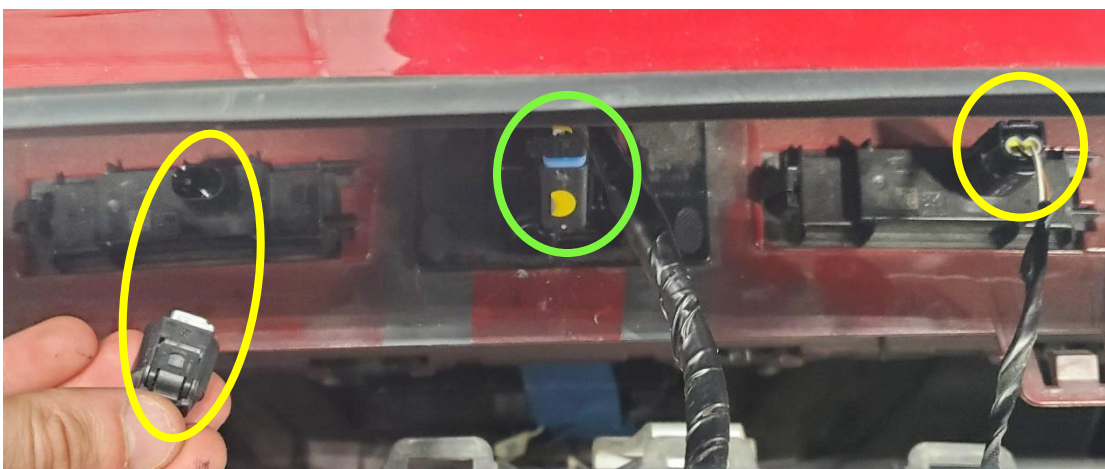
8 – Once you have the bumper completely unclipped from the car, it will still be attached by 5 electrical connectors. 1 for the rear camera, 2 for the license plate vanity lights, 1 for the 4th brake light, and 1 for the rear parking sensors. Be careful not to strain the wiring by setting the bumper down or pinching the connections before disconnecting them.

9 – Start on the right side, there will be one large connector used for the parking sensors. Depress the clip holding it in and then remove the plug



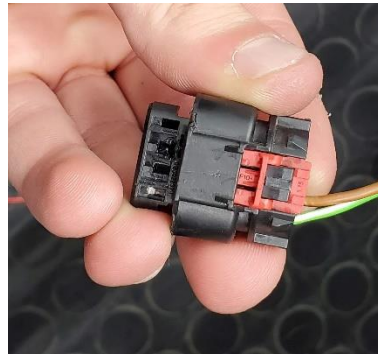
Disconnected rear parking sensor connector

10 – Now in the middle of the bumper, disconnect the rear license plate vanity lights, outlined in yellow below



11 – Disconnect the rear camera by squeezing the connector, shown in green above, together and pulling up.

12 – Last, on the 4th brake light plug, unlock the connector by sliding the red tab backwards and then unplug the harness from the factory light. The bumper will now be completely free from the car.



4th brake light connector with red tab in unlocked position

13 – With the bumper removed from the car, remove the 8mm bolts securing the factory 4th brake light into the bumper and take the light out



4th brake light bolt locations (4)

14 – Take the new OLM 4th brake light and install it in the bumper using the 4 bolts from step 13



OLM 4th brake light installed into bumper

15 – Next locate your taillight harness (either driver OR passenger side), shown here is the driver side harness. Follow the wire from your taillight to the wire retention clip located above the bumper beam, shown below.

Driver side taillight harness



Wire retention clip

Rear bumper beam

16 – To the right side of the retention clip, peel back and remove a section of the electrical tape covering the wires. There should now be 3 wires exposed: 1 brown, 1 purple w/ white stripe, and 1 green w/ blue stripe, as shown below

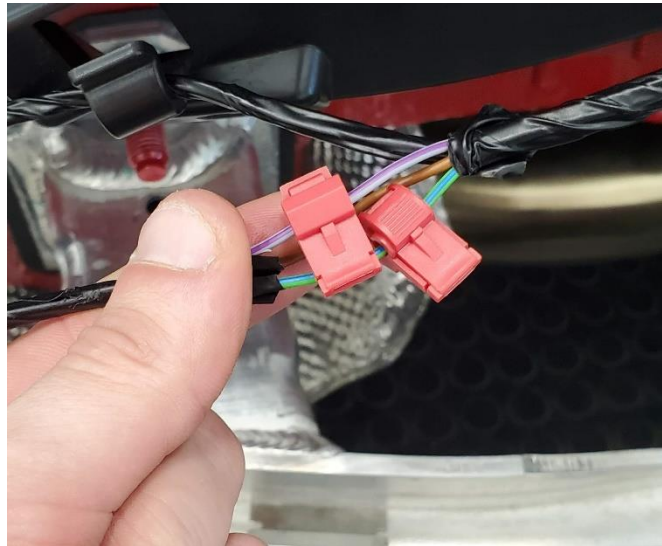


3 taillight wires, unsheathed



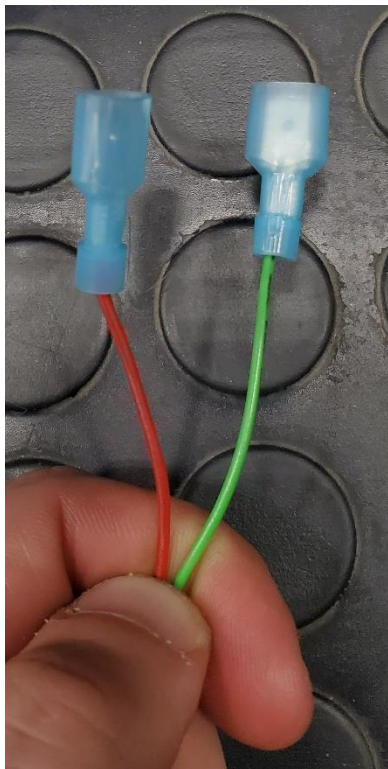
3 taillight wires, separated

17 – We will need to tap into the blue/green wire for brake light signal and the purple/white wire for parking light signal. Using the included vampire clamps, affix them to the wires, taking care to offset their locations for easier hook up.

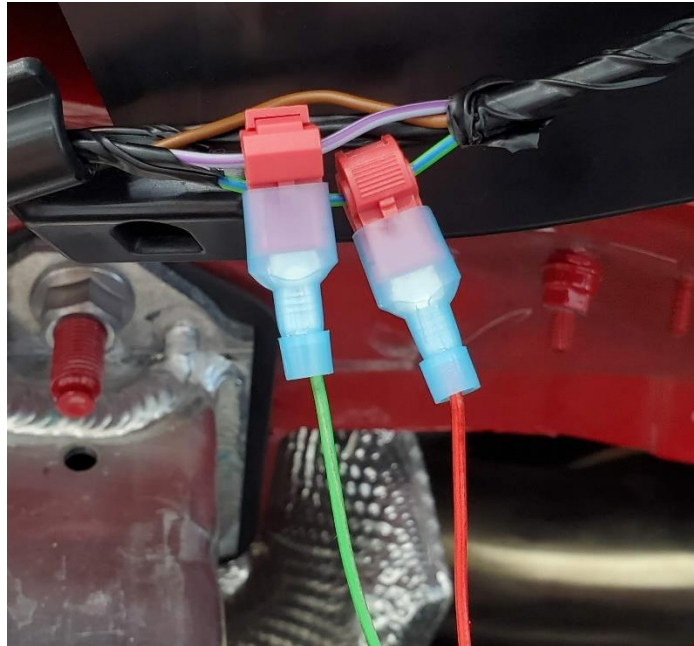


Both wires, with vampire clamps installed offset from one another

18 – Next, on the rear of the OLM 4th brake light will be two wires: green for parking lights and red for brake lights. Strip ¼" of insulation off the end of each wire and insert them into the 2 included crimp connectors. Crush with a crimping tool or set of pliers to complete the connection



19 – Plug the green wire into the connector on the purple/white wire and plug the red wire into the connector on the green/blue wire, as shown below.



20 – To verify your light is functioning correctly before reassembling your car test each of these functions:

Action	Expected Result From 4 th Brake Light
Depress brake pedal	Light will flash 5 times and become solid
Press hazard button switch	Light will flash red with taillight indicators
Close all doors & hatch, lock/unlock the vehicle	Light will flash red with taillight indicators
Press parking light button	Light will illuminate red with taillights
Start car, shift into reverse	Light will illuminate white with reverse

Note: F1 brake light flash has 5 second delay between consecutive brake pedal actuations

21 – Once proper function is verified, reassemble the vehicle in the reverse order taking care to plug in all factory wiring and retorque all bolts and fasteners.